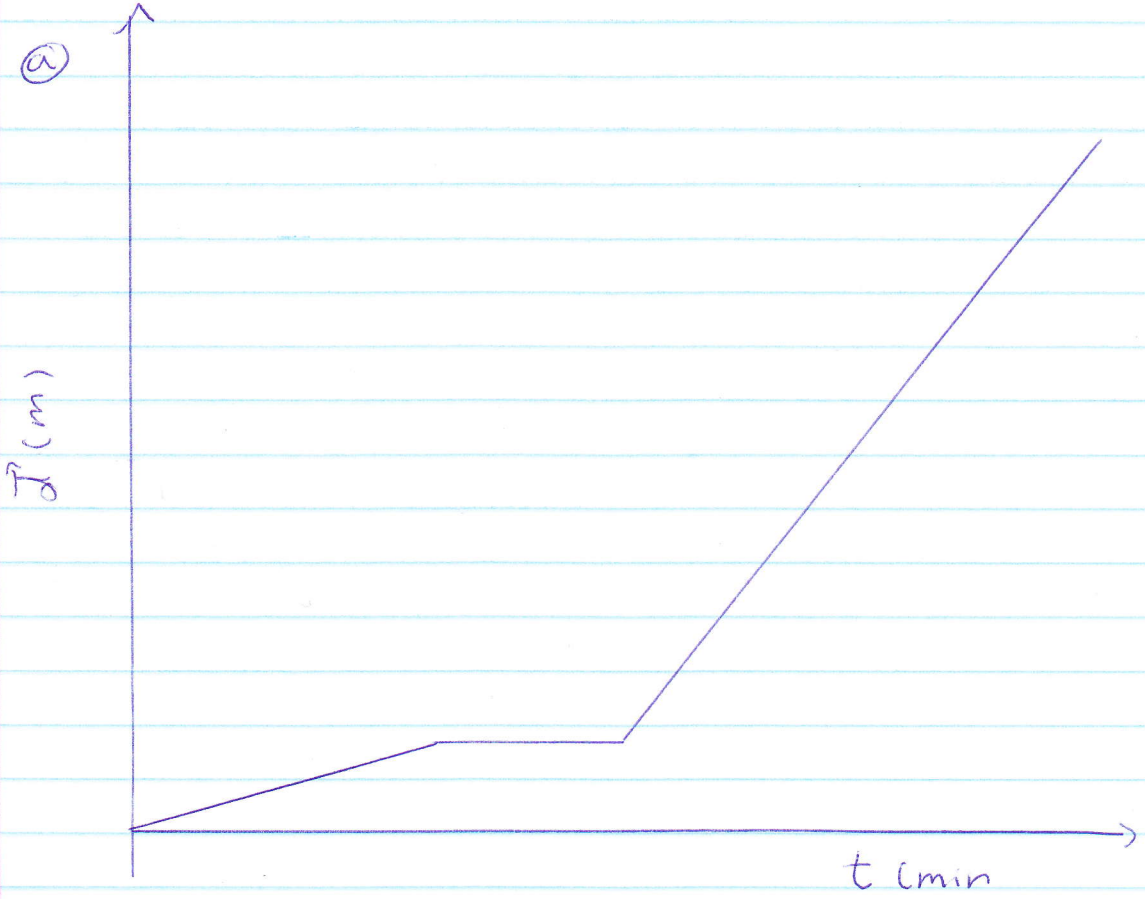
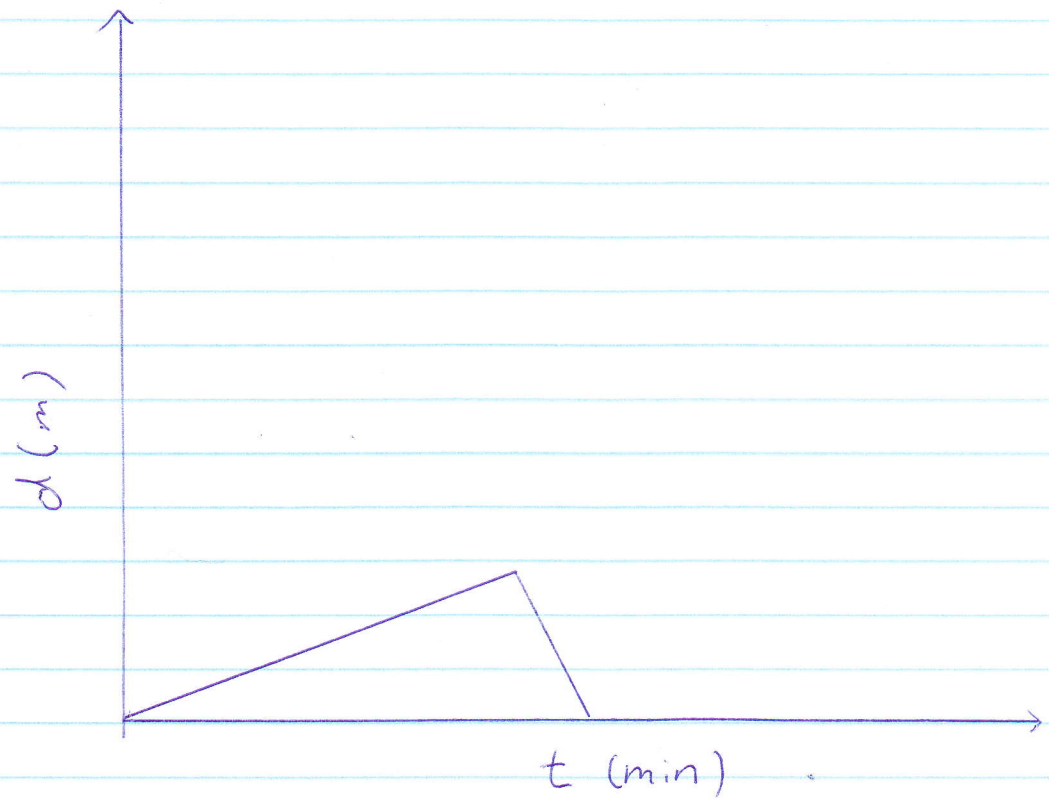


32.

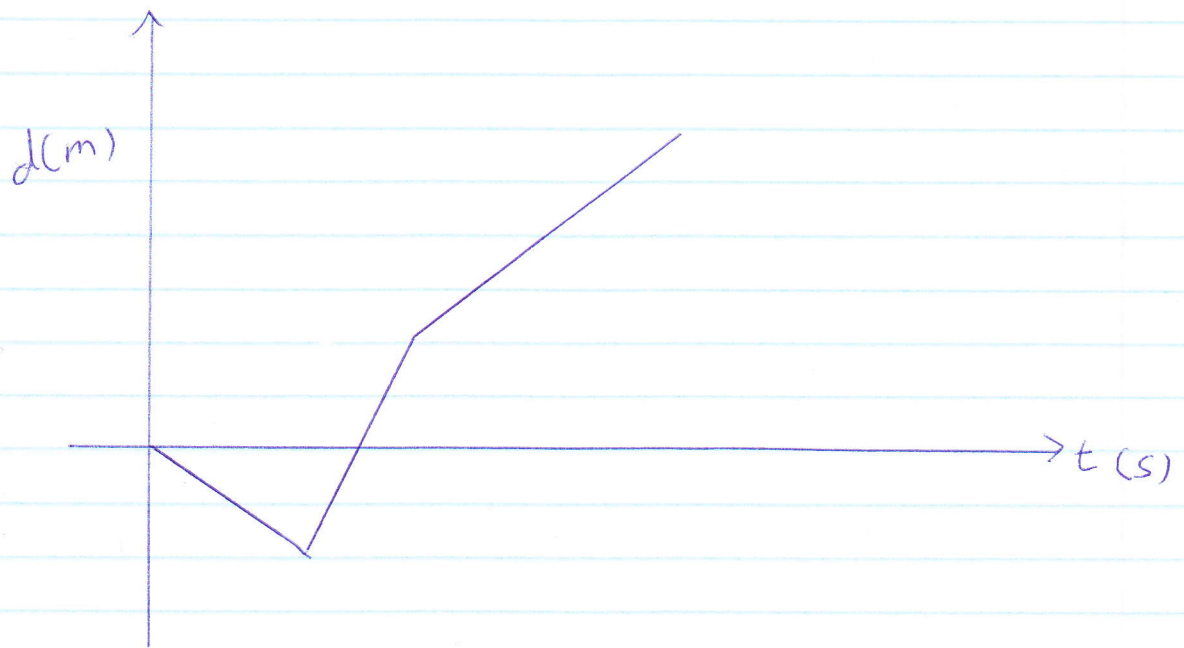
(a)



(b)



©

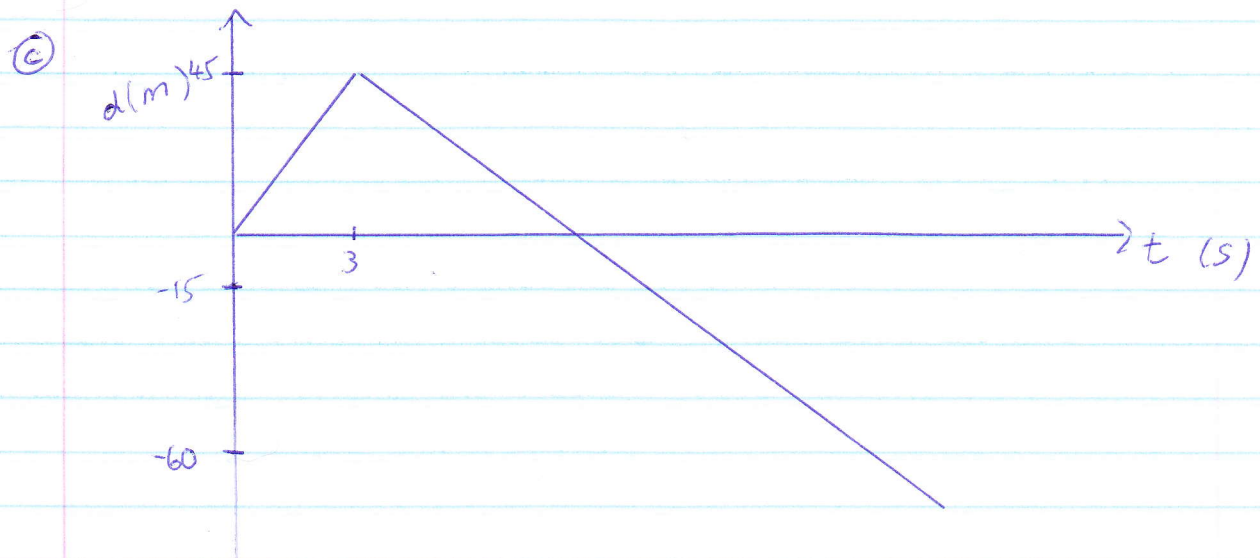
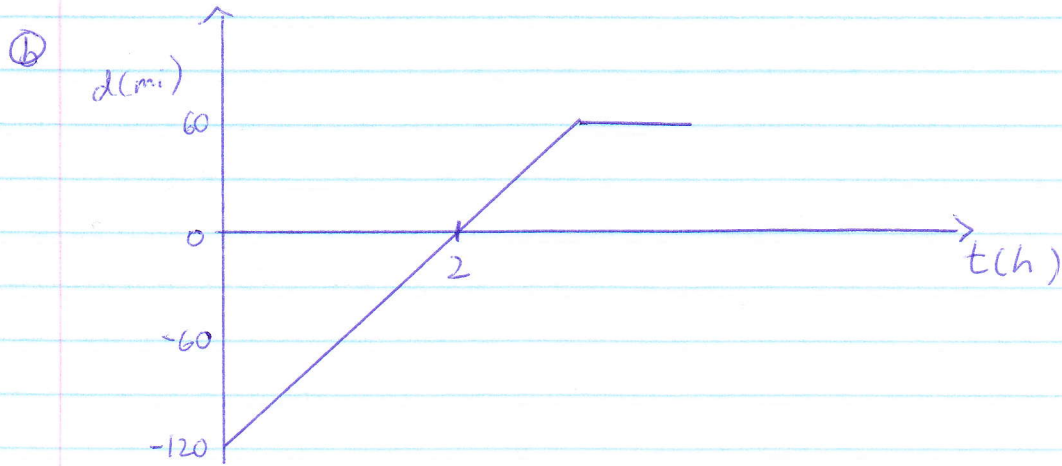
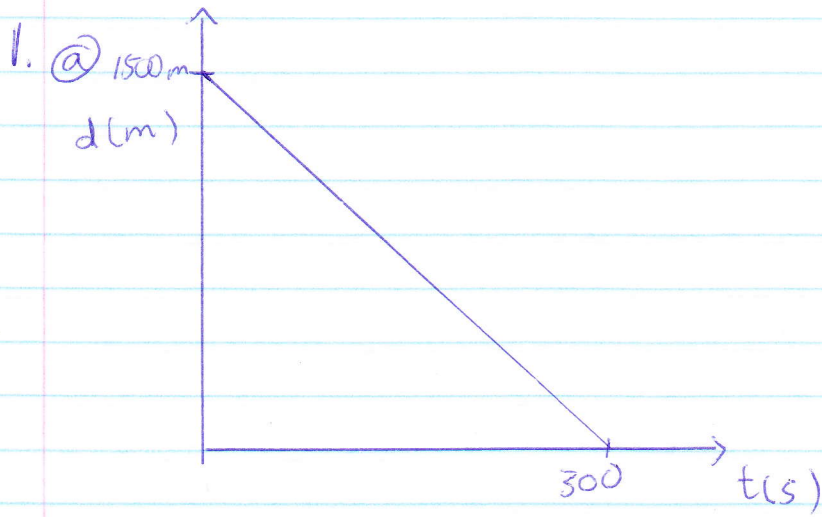


33. © A car moves forward at a speed of 60 mi/h for 10 minutes. Stops for 10 minutes, continues for 10 minutes at 30 mi/h, stops for 10 more minutes, continues at 60 mi/h for 10 more minutes, stops for 10 minutes. Finally it turns back and goes home.

This is only the skeleton of the story, as it contains no characters or plot. Since these stories will be different for everyone, no solutions are provided.

34. No, because the graph shows the object travelling backwards in time, or be in two places at once. Either case is not possible (at least with current technology).

Uniform Motion.



2. (a) The speed of A is greater than the speed of B because the curve of A has larger slope.

(b) No. The speeds are constant for both A and B.

3. Again, all stories are different, so no solutions will be given.